

ALL ABOUT CLEEVE

Vol: 32-02 **MARCH 2024** FREE

YOUR VILLAGE MAGAZINE
INDEPENDENT - SELF SUPPORTING - DELIVERED FREE TO EVERY HOME

SOUTH AMERICA COMES TO CLEEVE



Photo courtesy: The Cleeve Rambler.

All About Cleeve is also available on line <http://www.cleeveparishcouncil.co.uk/>

Closing COPY DATE: 15th March (for APRIL 2024 issue.)

CHAIR'S WELCOME

As I write, snow drops and daffodils are reappearing all around Cleeve with a real feeling that Spring is arriving and "in the air". Thank you to Dave Ridley, his sister Nancy and Marianne Pitman for their memories/articles, both in last month's and this month's editions. Our readership seem to really enjoy hearing about the history of Cleeve, so if there are more memories of our village's past, we would appreciate hearing about them with photos!

SoupaThursday's Warm Room 12.00 – 16.00, continues and is open to ALL in the village. Everyone is most welcome!

Easter is early this year so don't forget the clocks go forward on Easter Day! And lastly, best wishes and many thanks to Cleeve and Claverham's last Vicar, Nigel Thomas, who is sadly departing to pastures new!

Elizabeth Vaughan
Chair

GREAT WESTERN AIR AMBULANCE CHARITY

A Supporter Coordinator from Air Ambulance is coming to talk about GWAAC on TUESDAY 19th MARCH at 12.00 in the Holy Trinity Church room, this will be open to anyone in both Cleeve and Claverham to attend, all we ask is that anyone wanting to come let Lin know on 01934 838515 if they wish to stay for lunch (£3.00).

PANCAKE DAY LUNCH

Thank you to everyone who supported the Pancake Day Lunch. It was a lovely lunchtime with over 80 guests in the Village Hall. The event was to help fund the very expensive cost of draining and partially tarmacking the current swamp-like car park at Holy Trinity. However, thanks to our generous guests we raised £560 for this cause and, in addition, we were able to send £200 to the Clevedon Foodbank.

ALL ABOUT CLEEVE COMMITTEE

Elizabeth Vaughan	Chair	e.m.vaughan@icloud.com	07787 781716
Hilary Perry	Editor	hilary562000@gmail.com	
Diana Cook	Secretary		834621
Steve Molloy	Distribution		834412
Elizabeth Vaughan	Treasurer	e.m.vaughan@icloud.com	07787 781716
Pauline Leverett	Graphics		833648
Sarah Cush	Member		832059

We are grateful to the volunteers who walk the village monthly to deliver your free copy
Please note articles submitted by individuals do not necessarily represent the views of All About Cleeve. A full copy of our editorial DISCLAIMER / Committee minutes are available from the Secretary.

"The service provided by Parker's was exceptional. The team were transparent and maintained regular contact with me throughout the process. From viewings to completion, Parker's worked hard to establish a sale."



01275 463096



www.parkers-ea.co.uk

info@parkers-ea.co.uk
1/3 Station Road, Backwell,
North Somerset, BS48 3NW



Parker's

Estate Agents & Property Lettings

Successfully selling and letting homes since 1989

SUNDAYS CHURCH NOTICE BOARD - MARCH

- 3rd March - Lent 3** - 10.00 am - Holy Trinity: Shared Parish Communion
- 10th March - Mothering Sunday** - 10.00 am - St. Barnabas: Shared Parish Communion
- 17th March - Lent 5** - 10.00am - Holy Trinity: Shared Parish Communion
- HOLY WEEK**
- 24th March - Palm Sunday** -
10.00 am - St. Barnabas: Shared Parish Communion
4.00pm - Holy Trinity: Holy Week *Taizé*
- Tues 26th - Holy Tuesday** - 7.00pm - St Barnabas: Stations of the Cross
- Thur 28th - Maundy Thursday** - 7.00pm - Holy Trinity: *The Last Supper* – communion + footwashing
- Fri 29th - Good Friday** -
2.00pm - Holy Trinity: *Holy Ground* – Good Friday devotions
3.00pm - St Barnabas: *Prayers At The Cross*
- Sun 31st - Easter Sunday**
6.30am - Holy Trinity: *Sunrise Service* + cooked breakfast
11am - Holy Trinity: *He is Risen!* Easter Celebration plus farewell drinks and cake after the service for Nigel & Nickie.
- THURSDAY SERVICES: Holy Trinity, Cleeve**
- 6th 9.30am Bread of Fellowship
- 14th 9.30am Healing Prayer
- 21st 9.30am Healing Prayer + communion
- 28th 9.30am Maundy Thursday devotions



01934 283340

NAILSEA DISTRICT LEG CLUB

Our famous handbag stall takes place outside Waitrose on Saturday morning 18th May, an opportunity to purchase a bargain, or donate handbags no longer needed. These can be taken to 65 Nailsea High Street prior to 18 May, please ensure donations are clean, in good condition and empty.

Leg Club takes place 9.00 am – 12noon on Wednesdays at Nailsea Tithe Barn, and is available to anyone registered with Tyntesfield Medical Group, needing advice or treatment on lower leg issues. No appointment necessary and 'drop-ins' are very welcome, call in to see what happens and enjoy refreshments always on offer. Alternatively ask for an appointment via your surgery or talk to your nurse about Leg Club.

NEED A LIFT? CAN OFFER A LIFT?

Yatton Volunteer Drivers are a voluntary group in Yatton providing an affordable means of transport to enable local people (including Cleeve residents) to attend medical appointments in North Somerset and Bristol.

Could you help? More volunteer drivers are needed. The role is voluntary, highly flexible (to suit availability), and covers mileage costs. Is this worthwhile cause something you could get involved with?

For a lift – or to enquire about volunteering - Tel 01934 832796

Email yattonvolunteerdrivers@gmail.com Yatton

If a driver is not available from Yatton Volunteer Drivers, try Congresbury Carers - Margaret Leimdorfer Phone: 01934 834663.

SOUPA THURSDAY stay warm a little longer

A reminder that although March is regarded as the start of spring, the Warm Room runs through to the end of March – that means another four sessions, for everyone in Cleeve and Claverham who would like to come along every Thursday anytime between noon and 4pm, to enjoy great company, good fun and tasty treats, in the Church Room at Holy Trinity.



TIP FROM CLEEVE NURSERY

There is still time to transplant evergreen shrubs before it is too late but remember to disturb the roots as little as possible and keep as much soil attached to them as you can. Don't be afraid to trim the tops back a little as this will definitely help establishment. Be sure to water thoroughly and regularly throughout this year

**NORTH SOMERSET
WEDDING & EVENT CARS
PLUS EXECUTIVE AIRPORT
& CRUISE TRANSFERS**

07599 564794

Professional, Reliable, Affordable

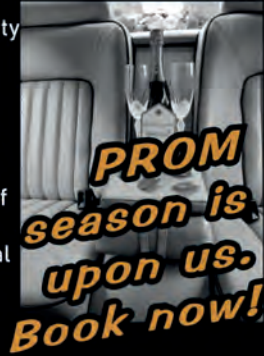
When you book with us, you know you are in the hands of a quality brand that is the first choice for any couple thinking of getting married or for any celebratory event such as Proms, Funerals and Birthdays. We happily embrace the LGBTQ+ community.



Treat yourself to a luxury journey to your airport, cruise port or City. Complimentary snacks and choice of drinks. Arrive in comfort and style. Our rates are often more economical than a standard taxi. Deposit from £25.00 to secure. Please check sample rates on our website.

We look forward to taking care of you.

northsomersetweddingandeventcars.co.uk



QUALITY AND VALUE
from the heart of the wood

fountain timber

Open 6 Days



Landscaping



Fencing



Gates



Garden Furniture



Decking & Cladding



Firewood

Call 01934 862710 | fountaintimber.co.uk





YATTON HORTICULTURAL SOCIETY

Dates for your diary:

March 16th. Spring Show, Yatton Village Hall

March 21st. Talk at Hangstones Pavilion, Seed raising and Propagation

Joan Pittock

**FOCOS
(Friends Of Cleeve Over Sixties)**

Winning numbers for the FOCOS lottery

6th January 2024	41	Marianne Pitman
27th January	16	Margaret & Paul Burrell
3rd February	46	Andrea Stoddart

Congratulation to our winners, and 'thank you' to everyone with a FOCOS lottery ticket, as the lottery underpins all our other fund-raising events.

TOUT'S

PASSIONATE ABOUT FOOD

VALID
BETWEEN
1ST & 22ND MARCH

£1 OFF

when you buy any **PIEMINISTER** pie



T&Cs apply. Offer valid at TOUT'S Cleeve, TOUT'S Langford & TOUT'S Nailsea between 01/03/24 and 22/03/24, whilst stocks last. Varieties may differ between stores. Customer entitled to £1 off a full price Pieminister pie. Tout Ltd reserve the right to withdraw offer at any time without notice. E&OE.

REAL PORK

Church Farm, Longmeadow, 101 Main Road,
Cleeve BS49 4PN

01934 832024

Bridget & Chris White



Here's where you can find us:

First Saturday - Axbridge Farmers Market (Village Square) 9am-1pm

Third Saturday - Claverham Village Market (Village Hall) 10am - 12.00pm

& Nailsea Farmers Market (Crown Glass Place) 9am - 1pm

Fourth Saturday - Clevedon Farmers Market (Queens square) 9am - 1pm

We also supply meat to:

'The Cork & Fork' 104 High Street, Yatton, BS49 4DW - 01934 834 230
and

'The Food Den' 14 West Street, Weston-Super-Mare - 01934 418 770

You can order and pick up meat via either shop

**Or ring us direct on 01934 832024 and place an order
which can be picked up or delivered locally**

Wrestling with the Gods in Terry Pratchett's, '*Discworld*'

An evening presentation with David McIlroy

HOLY TRINITY, CLEEVE

WEDNESDAY 20th MARCH 7pm

Free event with
refreshments.
All welcome -
especially Pratchett
fans!



SUN HALL 新好
CHINESE FOOD TO TAKEAWAY



7 BISHOP ROAD, CLEEVE, BRISTOL BS49 4NQ
01934 876888

justU
counselling

07519 554016
Reasonable Rates
First session free!

Amanda Bangham FdSc, Dip Couns, Mbacp

 justucounselling@gmail.com
 www.justucounselling.co.uk

 **LOCAL PLUMBER**

FOR ALL YOUR PLUMBING & HEATING REQUIREMENTS FROM TAP WASHERS TO CENTRAL HEATING



L.D. HULLAH 01934 833357
MOBILE: 07976 833974

HEALTHY FIT LIFESTYLE

PERSONAL TRAINING
QUALIFIED GP EXERCISE
REFERRAL TRAINER



1-2-1 PERSONAL TRAINING - individual sessions working on your personal goals, different times and days available at Cleeve Cricket Club

GROUP CLASSES at Claverham Village Hall
Mondays @ 6.45pm - Full Body Circuit Training
Wednesdays @ 6.15pm - Legs, Bums & Tums

Please get in touch to book your place

chelseahealHFL@gmail.com 07944 408481

www.**manwithavan**.info

Nigel




Checkatrade.com

Cheaper than a skip!

I have TWO vans, one for **RUBBISH clearances** and one for **REMOVALS**.

Nigel 'I'm local'
077427 91139

Palestinian Pop-up Café
Friday 15th March
Cleeve Village Hall Car Park
Collection from 5.30pm onward.
£15 meal.

Veggie & vegan options.
Four authentic Palestinian dishes by Alissar Amali.
Order 11th March.
Menu/order:
helen1962@hotmail.com

All proceeds will be sent to charities in Gaza.



ALL ABOUT BATS

Cleeve village is fortunate in that we have lots of wildlife in our vicinity. When thinking about wild animals, bats may not be the first thing that comes to mind, but the 'dark skies' street lighting policy is of great help to our Horseshoe Bats, who are so light-averse that they will not even fly out of their roosts if there are clear skies during a full moon! Since most of us know little or nothing about bats, here a few facts:-

How many types of bats are there?

Seventeen species of bats breed in Britain. The most common are the Pipistrelles (*Pipistrellus*) – tiny bats that weigh about the same as a 20p piece! Also, relatively common locally are bats of the *Myotis* family – like Natterer's Bat, and the highly protected Greater and Lesser Horseshoe bats (*Rhinolophus*).

How long do bats live?

We are used to the idea that small mammals don't live very long – for example a field mouse may only live for a year. However, bats are very long-lived – the Greater Horseshoe Bat can live for thirty years. Because of that, they breed quite slowly, which means that it would be easy for them to become extinct. For more information ibats.org.uk/uk-bats/ & chaseecology.co.uk/bats-in-the-uk/ are good places to look.

What do bats eat?

Bats are nocturnal – they only hunt at night. Pipistrelles, being small, love very small insects like midges. They can eat 3000 of these in one night! Horseshoe Bats are about 7 times bigger, so they prefer larger prey such as craneflies, moths and dung beetles. *Myotis* bats come somewhere in between, and often specialise in certain types of insect, moth or beetle.

How do bats find their prey in the dark?

Bats use high-pitched calls – echo-location - to find their prey. Their calls are so high-pitched humans generally can't hear them. Bat detectors are used to record bat calls at night – these recordings make it easier to detect which bats are present in each location. bats.org.uk/ has slowed-down recordings of each type of bat.

Where do bats roost and hibernate?

Bats generally hibernate throughout the winter as long as night-time temperatures are low. Our Horseshoe Bats hibernate in the old iron mines in Kings Wood. During warmer months bats will roost together in dark places like roof-spaces and holes inside trees, or perhaps high in the leaves of a tall tree. When they are breeding they will have a maternity roost where they can look after the young. Our Horseshoe Bat maternity roost is at Brockley Hall.

Our village falls entirely inside the North Somerset Bat SAC (Special Area of Conservation). This SAC exists to protect our Horseshoe Bats, as they are under threat of extinction in the UK. My next article will be entirely about these bats.

TIP FROM CLEEVE NURSERY

Pot indoor plants into bigger pots but check that they need it first! Gently knock the plant out of the pot and, if the roots are covering most of the compost, the plant will benefit from moving into a pot one or two sizes bigger. If they aren't yet then wait a while.

AAC Advertising Rates

Eighth page - £52.50 p.a.
Quarter page - £105 p.a.
Half page - £185 p.a.
Full page - £290 p.a.
Back page - £370 p.a.

Interested? Contact us for details
5,000 copies published annually
and read by many more

STAR 65 BEREAVEMENT GROUP

Free and open drop in sessions to our peer supported Bereavement and Loss group every 2nd and 4th Wednesday 4-6pm and Saturday 12-noon at 65 High Street, Nailsea. Come and chat or just listen.

For information contact:
Pam Lambert 01275 462820
or 07977 9564
Gill Atkinson 07722 298550

COMMUNITY RESILIENCE

The Village Hall is the assembly point and operating base for the community resilience team (when mobilised) providing help and assistance in an emergency.

So if you need (or are willing to offer) help in an emergency and can not contact Community Resilience by phone please go along to the village hall.

Contact details for Community Resilience can be found in the directory at the back of this magazine

Keith C. Britton & Son
Funeral Directors 

Independent Family Funeral Directors.
Established over 55 years

10 High Street, Yatton, North Somerset BS49 4JA
Tel: **01934 832115**

Private Chapel of Rest
24-hour emergency service 365 days a year.
Home visits available for funeral arrangements and no obligation pre-paid plans.

Arthur E. Davey & Sons Ltd

Independent Family Funeral Directors
01275 852307

Serving the community for more than three generations 

Pre-payment Plans
Private Chapels of Rest
Home visits

 Tony Davey Dip F.D. M.B.L.F.D.
Nicola Davey Dip F.A.A.
David Johnston
Yvonne Wadsworth

 **82 Silver Street**
Nailsea
BS48 2DS
www.aedavey.co.uk

Mason's FUNERAL DIRECTORS

Mark Mason
DIPFD, LMBIFD

For a friendly, caring and professional service.

01934 624222

Covering Cleve and surrounding villages



47 Drove Road
Weston-super-Mare
BS23 3NN



www.masonsfuneral.co.uk

PLANT OF THE MONTH
***Phalaenopsis*, moth orchids**

Moth orchids, are elegant, long-flowering epiphytes that grow on tropical tree branches in the wild, obtaining light filtered through the canopy using aerial roots to absorb carbon dioxide and moisture from the humidity surrounding them.

Orchid's thrive in indirect sunlight with consistent warm temperatures around 18°C - 30°C (64°F - 86°F) with night time temperatures around 10-15 degrees cooler to promote flowering. A north-facing kitchen window is ideal; keep them out of direct light which can scorch leaves.

It can sometimes be trial and error until you find the perfect spot but if your orchid is not producing flowers it will be likely due to light or temperature so move the pot. Orchids like humid conditions and grow particularly well in bathrooms and kitchens. Mist leaves every few days with rainwater.

They have large leaves prone to collecting dust; use a damp cloth to gently remove dirt so the plant can easily photosynthesize.

Orchids detest sitting in water so remove the plant from its pot and flush with water once a week, avoiding the plant's crown. Return to its pot once excess water has drained away. Feed every couple of weeks when the plant is actively producing leaves and flowers.

Repot every couple of years with shredded bark chips or a professional peat-free compost bark to support roots; use a clear pot so roots can photosynthesize.

Rejuvenate plants by snipping off dead roots, this will give healthy roots space to grow. Aerial roots are the orchid's blood vessels; healthy air roots are rounded and green, thirsty roots are silvery-white and unhappy roots are beige and shrivelled. Ailing roots could be due to low humidity so give them a good mist.



Debi Holland





COUNTRY COLLECTION

Contact us at:
Tel: 01934 832269
simon@countrycollection.co
www.countrycollection.co

Visit us at:
Country Collection,
Rhodyate Hill,
Congresbury, North
Somerset
BS49 5AJ

A family run business with over 20 years experience. Based in Congresbury, North Somerset. We offer a wide range of wood, multi fuel, gas and electric stoves and fireplaces as well as new outdoor fires. Our installers are HETAS & Gas Safe registered for full peace of mind.

**FOCOS BINGO EVENING
FRIDAY 12TH APRIL – CLEEVE VILLAGE HALL**

As our regular players know, at the FOCOS Bingo Evening there will be good food, great fun and super prizes. A bar will be available for the evening at the Hall, so we would suggest an arrival around 7.15pm, for the delicious supper to be served at 7.30pm.

Tickets are just £10 to include a hot supper and a sweet [vegetarian options are available], plus 6 games of Bingo. Every game has great prizes guaranteed for a line and a full house. Tickets available from the FOCOS BINGO HOT LINE on 838515 or 832917.

Also - transport is available from your home to the Hall and back again – just ask for a lift when you book.

All profits will help to provide for the FOCOS Mystery Outing for 2024.



FAREWELL TO OUR VICAR, NIGEL AND HIS WIFE NICKIE

Cleeve has had its own vicar since 1840 when Holy Trinity church was built but, sadly on 31st March, that is to come to an end. On that day we are saying farewell to Nigel and Nickie, as Nigel's post as Vicar of Cleeve and Claverham disappears as part of the reduction in clergy numbers throughout the Bath and Wells Diocese.

We will miss both Nigel and Nickie who have been with us in the village serving us here in Cleeve at Holy Trinity and at St Barnabas, in Claverham, since 2017.

When Nigel was appointed, his remit was to get involved with, and interact within, the community and he has done lots in that area, despite being seriously unwell during the covid pandemic.

Under Nigel's guidance there were many interesting 'On the Edge' initiatives, annual New Year's Day hikes around our two villages, the arrival of new style Taize services on Sunday evenings at Holy Trinity, his involvement in the setting up and workings of the Goblin Combe Community Garden, plus working on the 'Love Cleeve' project in 2021.

Nigel has become a regular and popular visitor to Court de Wyck Church School, with stories, prayers and other initiatives to share with children and staff. His work with North Somerset Arts Week has turned both churches into hubs where artists and artisans can display their works for the enjoyment of everyone in North Somerset. We will miss Nigel, his care for those less fortunate than ourselves, especially refugees, and we are grateful for his sharing of his favourite poets, especially Malcolm Guite.

Nickie too, has played an important part, working alongside Nigel, with her re-wilding ideas that have been introduced into the churchyard, her many and varied works involving labyrinths and her Capacitor classes.

We are very sorry to be losing them and will miss them both.

Nickie and Nigel are returning to us for a special farewell 'thank you' afternoon tea **open to everyone in the village on Friday April 5th in the Village Hall**, from 3pm onwards. They would love to see as many Cleeve and Claverham folks as possible.

The process of appointing a priest in charge of the newly formed United Benefice of Yatton with Kenn and Kingston Seymour, Cleeve with Claverham has begun but for the next few months we will be in an interregnum. Anyone with enquiries concerned with funerals, weddings or baptisms should contact the Benefice office in Yatton 01935 832184.

HOLY TRINITY CHURCH EASTER DAY SERVICE

During the 11am service on Easter Day (31st March) at Holy Trinity there will be an Easter Egg Hunt for all the children present; come along and share the joy.

TIPS FROM CLEEVE NURSERY

Remove or switch off the water heater, turn on the pump and start feeding the fish.

Keep feeding the birds

Consider leaving an area to go "wild" as a sanctuary for wildlife.



**LOCALLY SOURCED BAR AND
BLUES/ROCK NIGHT
Cleeve Village Hall April 13th**

Join us for a special evening with a locally sourced Beer, Cider and Wine tasting bar plus live popular music from singer/guitarist Mike Bess. With candle lit tables, complimentary nibbles and two sets of music from many genres with Mike's bluesy, rock influences at it's heart, this will be a wonderful evening to socialise whilst supporting the Hall & live music. Tickets are £10 and includes one free drink. Booking early is recommended and appreciated for catering purposes from this link below –

www.wegotickets.com/event/610338/



SUNRISE SERVICE

An invitation to everyone in Cleeve to join us for an event that is firmly part of the Holy Trinity Church's calendar.

We look forward to welcoming many worshippers to the Sunrise Service on Easter Day, 31st March, to celebrate the resurrection of our Lord Jesus Christ.

The outdoor service commences in the tranquillity and peace of a spring morning at 6.30am and is followed by a Full English Breakfast in the Church Room (vegetarian options are available).

Numbers and preferences are required purely to aid the caterers (there is no cost for the breakfast). Please ring Lin on 838515 before Wednesday 27th March, just to let us know you are joining us on this special day.

TIPS FROM CLEEVE NURSERY

Plant grape vines now. Our local soil suits them if well drained. Plant in the sunniest place.

Prune Blueberry bushes by removing weak, old and dead shoots. Cut out up to 25% of all wood from established bushes (3 years or older).

Plant strawberry runners if you missed autumn planting.

Cover established strawberry runners with low polytunnels or fleece covered tunnels. Lift the sides slightly on warm days to let the bees in to pollinate the flowers.

**Your local shop for newspapers, off licence, groceries,
lottery, PayPoint, cashback and Post Office**



**Opening hours Mon-Fri 6.00am-10.00pm, Sat-Sun 7.00am-10.00pm
Post Office Tuesday and Friday 9.00am-12.00pm
Tel 01934 834893**

POST OFFICE OPENING TIMES

Cleeve (Good News)
Tuesday & Friday 09.00 – 12.00

Claverham (Village Hall)
Monday & Wednesday 09.00 -12.00

LOCAL POST-BOX COLLECTION TIMES

	Mon-Fri	Sat.
Woodview Drive	9.00am	7.00am
Bishops Road	9.00am	7.00am
Main Road (Old PO)	9.00pm	7.00am
Yatton PO	5.45pm	11.15am
Congresbury PO	5.15pm	11.15am
Congresbury Broad St	5.30pm	9.00am
Backwell PO	5.30pm	12.15pm
Clevedon Delivery Office	6.00pm	



YATTON MUSIC SOCIETY

Boglárka György (violin) & Amy Butler (piano) St Mary's, Yatton, 23rd March.

A memorable evening by the prize winning Hungarian violinist Boglárka György from the Liszt Academy of music in Budapest. Boglárka will play a Cuypers 1797 violin, kindly on loan to her from the Harrison-Frank Family Foundation. She will be accompanied by the brilliant Oxford graduate pianist Amy Butler. Their programme will include a variety of music to suit all tastes including popular classical, Hungarian and sparkling Gershwin music to conclude the evening.

The concert starts at 7.30pm at St Mary's Church, tickets price £10, half price for students over 16, children free. Details of this concert and future events can be found on Yatton Music Society's website www.yms.org.uk

David Ford



**BERYL'S DAY OUT PERFORMED BY THE MINISTRY OF ENTERTAINMENT
AT CLEEVE VILLAGE HALL ON JAN 27TH**

For one night only we had a fun-filled retro trip back to Bristol Zoo in the 1960s courtesy of Kate McNab and Kim Hicks. They delivered a heart-warming, humorous and charming play, with real life stories woven into the narrative to make this a wonderful nostalgic experience. Beryl oozed enthusiasm as she visited the various enclosures, reaching out to all corners of the Zoo's rich history in one visit! Interspersed with delightful songs, the fastest of Costume changes and an array of characters, the evening flew by and a great night was had by all who came. The Ministry of Entertainment are a regular to Cleeve and we hope to welcome them back with a new play next year. Meanwhile look out for our next two events: 'Locally Sourced' – a tasting bar night selling locally produced drinks accompanied by wonderful Blues/pop covers music courtesy of Mike Bess on April 13th and the return of singer songwriter Martin Stephenson from The Daintees on Sept 8th.



CLEEVE QUARRY PART 2

Following on from last month's article is information given from my father Ernest Ridley who was at Cleeve School from 1906 and my friend Reg Stevens who was at the school in the 1930's, they informed me of the procedure of how the quarrymen produced the stone for road making etc.

The holes were drilled into the quarry face by two men, one held a large iron bar with a drill bit on the end the other man hit the bar with a sledge hammer, between strikes the bar would be turned so it was hit turn hit turn, obviously then as the hole got deeper the dust at the bottom had to be removed, this was done by using a hazel stick with a flower carved on the end as shown in the picture (Fig 1) this flower was dipped in a bucket of water to make it wet then it was inserted into the hole that was being made where the dust would stick to the wet hazel flower head and this was washed off in the bucket of water ready for the next time, this must have been a laborious task to make a 6 foot hole in depth to accept the charge of dynamite, which was dully inserted and a fuse added, the fuse was then lit and the men would make a hasty retreat, half of the diameter of the drill holes are to be seen on the quarry face to this day. Sometimes the rocks would hit the windows and roof tiles of the school!

After the rock had been blasted from the quarry face onto the quarry floor the men would set to on there hands and knees with a lump hammer and crack the rocks into the size required, this was then shovelled into a square yard measured by four pieces of batten and that's how they would be paid by counting the little pyramids of stone on the quarry floor, as shown in (Fig 2).

The two rocks shown in (Fig 3) I was told are rocks that could not be broken, only bits were chipped off so they were discarded and left there as waste.

David Ridley

Hazel Flower (Fig. 1)





Fig. 2



Fig. 3

CLEEVE KIDS CORNER

The play area at Cleeve Kids Corner in King George V Playing Fields was established some years ago by a group of local parents. It has been well used and loved by many children from within the village and beyond. Some of the equipment, however, is now almost 30 years old and is becoming rotten and broken. All equipment needs substantial repair or to be replaced entirely. A risk assessment in autumn 2023 identified a number of areas of concern and the play area has been closed since this time for safety reasons.

The play area receives no statutory funding or other support from North Somerset Council and is administered by a small group of parent volunteers. All repairs need to be covered through fundraising or grant applications. We were very fortunate to receive a grant in December 2023 from the Bristol Airport Community Fund. This will pay to replace both sets of swings which had been identified as being the most urgently in need of attention.

We are seeking to fundraise for further replacement and repairs and have set up a Just Giving page and QR code to enable people to donate. Please do consider donating if you would like to support the park, or sharing the page with others.

If you can offer any other financial assistance through grant giving then please do contact Sarah Stacey mrssarahstacey@gmail.com



CLEEVE VILLAGE HALL

Are you looking for a venue for a party, wedding, meeting, workshop or a space for a corporate event?

Cleeve village hall could be the venue for you.

Facilities include the main hall with a capacity for up to 120 people, as well as a separate side room & kitchen.

Competitive rates

For further details please contact Gill Roe

gillroe@btopenworld.com

01934 832917



Solarsense

Renewable Energy Installers

Arrange your free, no obligation quote today
Find out how much you could save!



01275 461 800

info@solarsense-uk.com

www.solarsense-uk.com

Helios House, Brockley Lane,
Backwell, Bristol, BS48 4AH

TIPS FROM CLEEVE NURSERY

Prune most roses; [Climbing, Rambling and shrub roses are best pruned in summer after the main flush of flower]. Cut back to 6-8" from the ground and cut just above a bud, prune out any branches that are crossing to leave an open centre. Remove any root suckers as close to the roots as possible (neatly tearing them off discourages more). Cut out any weak, dead or diseased shoots.

Hang Agralan Yellow Sticky Whitefly pads up in your greenhouse and conservatories now. These will act like fly papers and are completely non toxic to humans. If you introduce natural predators to control your pests, you must take these pads down, because they will trap the good guys as well as the pests

Divide and replant overcrowded clumps of herbs.

VILLAGE DIARY

of
EVENTS IN AND AROUND CLEEVE



LOCAL MARKETS

1st Saturday of month - Kingston Seymour
2nd Saturday of month - Kenn & Yatton
3rd Saturday of month - Claverham

MARCH 2024

Yatton Horticultural Society. March 16th Spring Show. Yatton Village Hall
Mother's Union. March 19th. Air Ambulance Talk. Holy Trinity Church Room. 12noon
Wrestling with the Gods. March 20th. Holy Trinity. 7pm
Yatton Horticultural Society. March 21st. Talk. Hangstones Pavilion
Yatton Music Society. March 23rd. St Mary's Church. 7:30pm
Sunrise Service. March 31st. Holy Trinity. 6:30am
Easter Egg Hunt. March 31st. Holy Trinity. 11:00am

APRIL 2024

Thank You Afternoon Tea. April 5th. Cleeve Village Hall. 3:00pm
FOCOS Bingo Night. April 12th. Cleeve Village Hall

ONGOING

Cleeve Knitting Knights. Alterknit Universe. Sundays. 1 - 5pm
Council Meetings. 2nd Tuesday each month except August and December.
Cleeve Village Hall. 7:30pm
Nailsea District Leg Club. Wednesday 9am - noon
Soupa Thursday. Holy Trinity Church. Weekly. Noon-4pm

Brockley Stores

Fresh produce including seasonal and locally grown
Good range of cheese and dairy
In-house sliced ham, charcuterie, olives & anti-pasti
Daily delivery of artisan breads
Groceries, sweets and chocolates
An extensive range of handmade food

Brockley Stores where food is.....

SOURCED WITH CARE

SOLD WITH INTEGRITY

SEVEN DAYS A WEEK

deliciously different

01275 462 753

Brockley Stores
Main Road (A370)
Brockley, North Somerset
Mon - Sat 8am - 6pm
Sunday 9am - 5pm



The home of quality plants, expert
advice & inspiration for your garden
Located just 10 miles outside Bristol

Quality Outdoor Plants

Unusual Houseplants

Peat-Free Compost

Beautiful Gifts & Cards

Seeds & Bulbs

Wildlife Care

Indoor & Outdoor Pots

Café serving fresh food & drinks



Follow us on Facebook & Instagram for updates

www.cleevenursery.co.uk

138 Main Road BS38 4PW

01934 832134 / info@cleevenursery.co.uk

LOCAL DIRECTORY
ALL CODES 01934 UNLESS OTHERWISE STATED

Should your group be listed here? Are your entries correct?

Chemists	Backwell	(01275) 462386
	Yatton	832366
Clavertots	Michele Jenkinson	838671
Cleeve Guides	Helen Mortimer	(01454) 771957
Cleeve Scouts/Cubs	Steve Atrill	833912
Cleeve Toddlers	Rebecca York	0759 674905
Community Resilience	Steve Molloy	834412 / 07988 656023
	Ross Floyd	(01275) 462211 / 07974 308398
Court de Wyck School Assc	Sarah Palmer	(01275) 462068
Cricket Club clevecricketclub@outlook.com	John Hance	07881 374958
Cricket Youth Team	Carey Elswood	clevecc.yahoo.com
Dentist	Cleeve	835753
Dog Training	Mrs Herman	834498
Dog Warden - Environmentalprotectiongeneralenquiries@n-somerset.gov.Uk		(01275) 888802
FOCOS	Mrs Gill Roe	832917
Football (Sporting Weston Football)	Gary Booth sportingwestonfc@gmail.com	0791952705
Guide Dogs	Mrs Jane Newton	(01275) 873024
Holy Trinity (Churchwardens)	Nick Cush	832059
Holy Trinity (Team Minister)	c/o Team Office	832184
Ladies Group	Mrs Diana Cook	834621
Leg Clinic	Carole Brooke	07954 302498
	Sandy Riley	(01275) 853547
Medical Centres	Backwell	(01275) 465100
	Yatton	839820
Mothers' Union	Andrea Stoddart	832458
Noise nuisance	Noise Control Officer	634847
North Somerset Council	(All Departments)	888888
Parochial Church Council	Dave Mortimer	838515
Parish Council	Andy Warren	07932 191964
Playing Field Trustees	Alice Jones	877208
POLICE	(NON-999 calls)	101
Post Offices	Backwell	(01275) 462721
	Yatton	832201
	Cleeve (Good News)	833295
	Claverham (Village Hall)	876581
Registrar	Births, Marriages, Deaths	427552
Sinclair Pavilion (Bookings)	Alice Jones	877208
Colin Warren		07944 758510
Table Tennis Club	Mr Mike Withyman	833986
Tennis Club	clevetennisclub@gmail.com	835150
Tennis Club Junior Coaching	John Tate	(johntatetennis@talk21.com)
		(01275) 464373
Village Agent	Maxine Gilman	07967 344766
Village Hall Bookings	Mrs Gill Roe	832917
Village Hall Secretary	Diana Cook	834621
YACWAG (Wildlife Action)	Mrs. Win Lowman	833596
Yatton History Society	Mrs Marianne Pitman	838801
Yatton Horticultural Society	Mrs Joan Pittock	832790
Yatton Music Society	David Ford	830255

Clarkes Catering of Wrington

Fresh homemade food delivered for business lunches, funerals, cream teas and cold buffets

Wrington 01934 862085
 email: vicky.clarke@talk21.com
www.clarkesfood.com




imagine IT

Pauline Leverett
 07944 558587
www.imagine-it.co.uk

Web design & hosting
 Small websites for new businesses
 Design for print




IONAIDA
SOFT FURNISHINGS

- Curtain advice, make-up, fitting, poles & tracks.
- Roman, Venetian, vertical & roller blinds.
- Upholstery fabrics and re-upholstery.
- Large range of fabric and wallpaper samples.
- Cushions, bedding and much more, just ask....

A large selection of fabrics for all budgets
 Over 30 years experience - Company established in 2005
01275 464057 or 07854 525472
www.ionaida.com




J. A. Frost
B.A., B.Mus., Hon.TCM
 (formerly Senior Examiner in Music,
 Trinity College London)
Consultant for all levels of music examinations, and tuition in music theory
 27 Cleeve Drive, Cleeve, BS49 4NW
Tel: 01934 832589

LAWN MOWERS

Repairs / Servicing / Sharpening /
 New & Reconditioned Sales / Ride-on
 Tractor Mowers / Shear Sharpening

Tel: (01275) 464403

King Garden Machinery
 Unit 5, Chelvey Waterworks
 Chelvey, Nr. Backwell



S.E. HARRIS
 TREE SERVICES LTD

01934 835652
07957 156358

ALL TREE WORK UNDERTAKEN
 FREE QUOTATIONS

NC Arb - NPTC - Fully Insured
 e: sam@seharristreeservices.co.uk
 w: seharristreeservices.co.uk

Local Beer - Brewed on Iwood Lane
 Delivered to your door



Twisted Oak Brewery - Yeewood Farm
 Wrington BS40 5NU
 Tel.01934 310515
www.twistedoakbrewery.co.uk

Tuesday March 5th
 Yatton Local History Society talk by
 Robert Jones on Bristol on 1480 map
 7 30pm Yatton Methodist Church BS49
 4DW. Contact
yattonlocalhistorysoc@gmail.com

Marianne Pitman

RELAX
YOU'RE IN
SAFE
HANDS



Robin King

Estate
Agents

01934 876226